

NOTES: UNLESS OTHERWISE SPECIFIED

1. THIS DRAWING IS NOT FOR CONSTRUCTION UNTIL ENGINEERING HAS REVIEWED AND STAMPED THIS DOCUMENT.

2. DIMENSIONS SHOWN ARE MILIMETERS.

3. THE SELF-BONDING SYSTEM AND SINGLE GROUND LUG IS FOR USE WITH PV MODULES THAT HAVE A MAXIMUM SERIES FUSE RATING OF 30A.

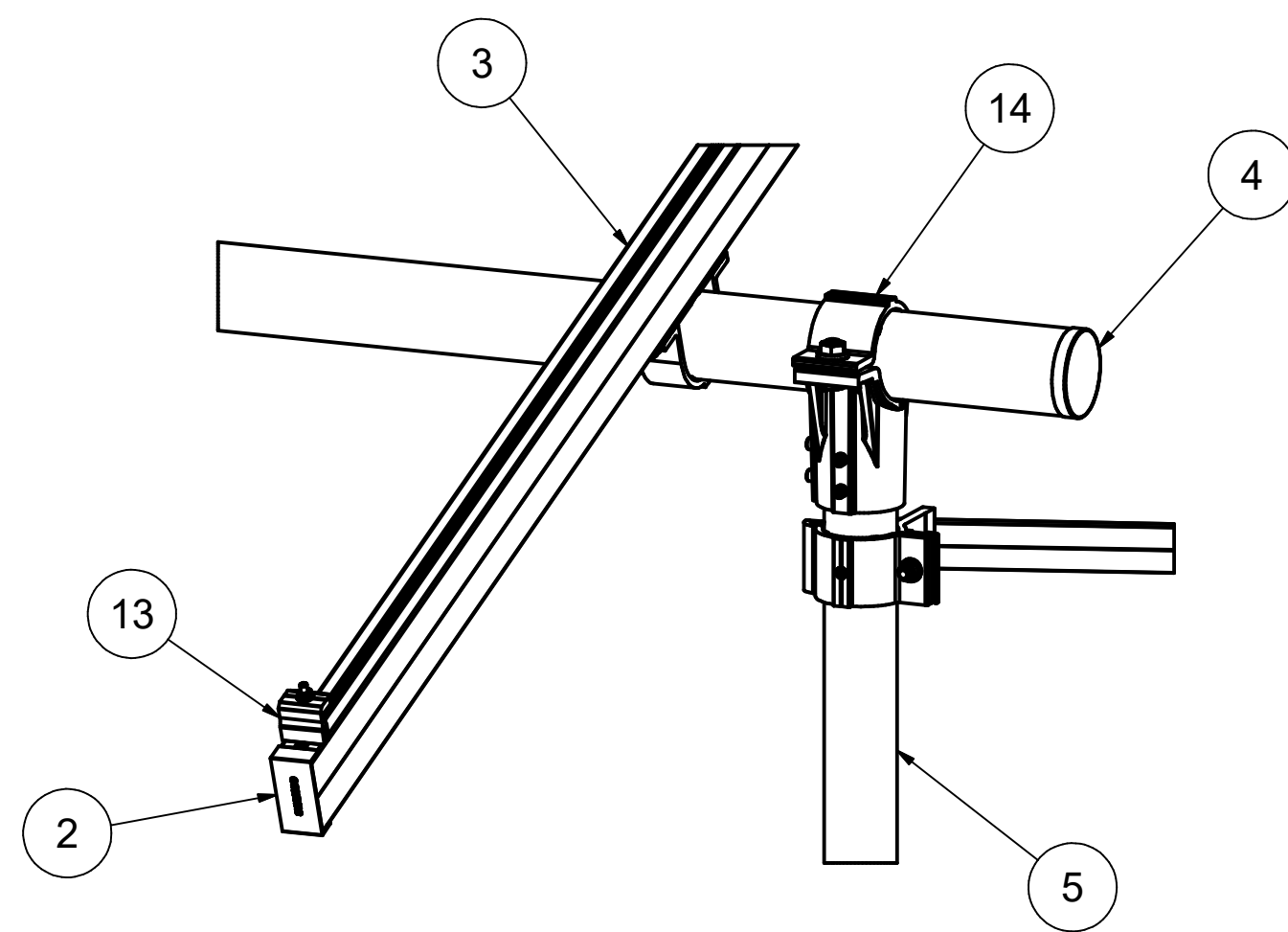
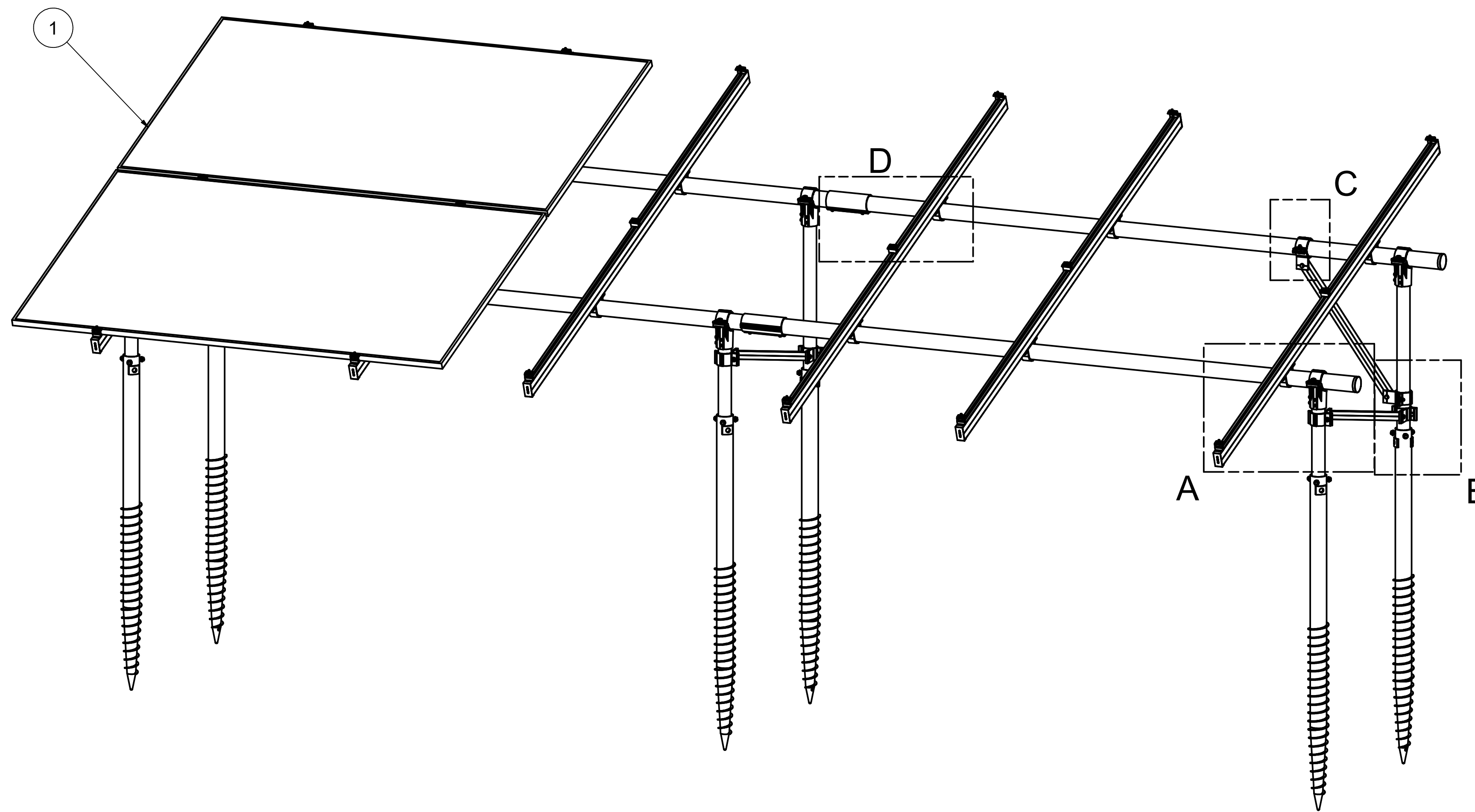
4. MATERIALS ARE AS SPECIFIED OR EQUIVALENT:  
 HARDWARE: 304 STAINLESS STEEL  
 FABRICATED EXTRUDED PARTS: 6005-T5 ALUMINUM ALLOY  
 FABRICATED DIE CAST PARTS: ANSI/AA A380 ALUMINUM ALLOY  
 STEEL PIPE: SCHEDULE 40 GALVANIZED  
 ALUMINUM PIPE: SCHEDULE 10 ANODIZED

5. THE MAXIMUM PERMISSIBLE LENGTH OF ANY STRUCTURE SHALL BE 200 FT. FOR SYSTEMS USING A SHARED RAIL CONFIGURATION, A THERMAL BREAK IS REQUIRED IN THE RAIL EVERY 40 FT. PER THE DRAWING DETAILS.

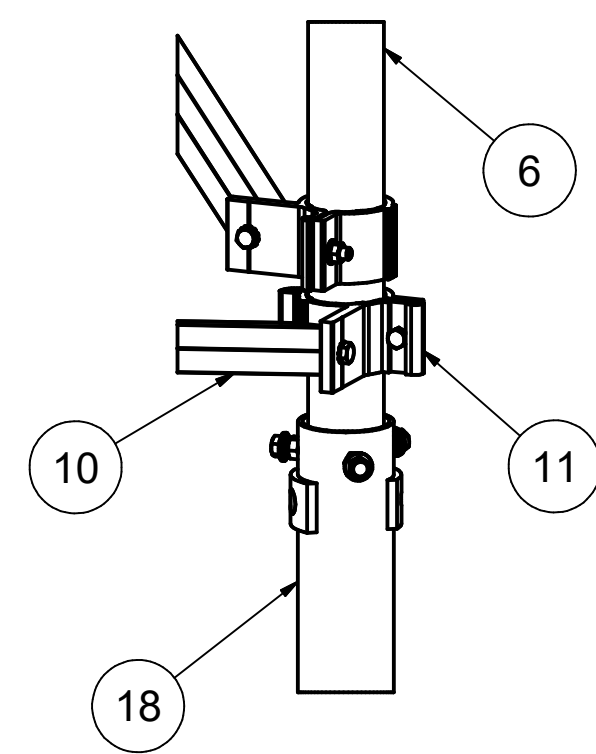
6. 2LX3-20DEG-GSM.

7. 1 OF 1 ARRAY TYPE.

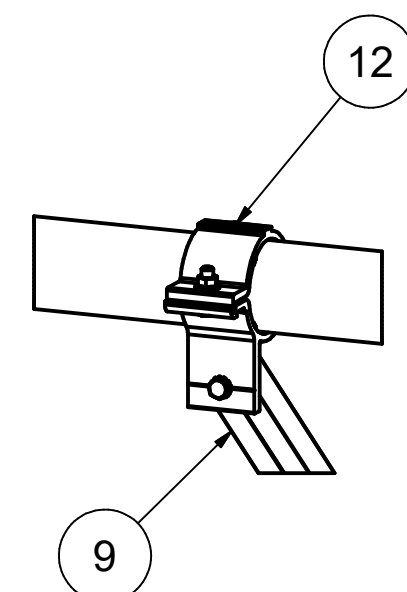
8. 1 ARRAY TOTAL.



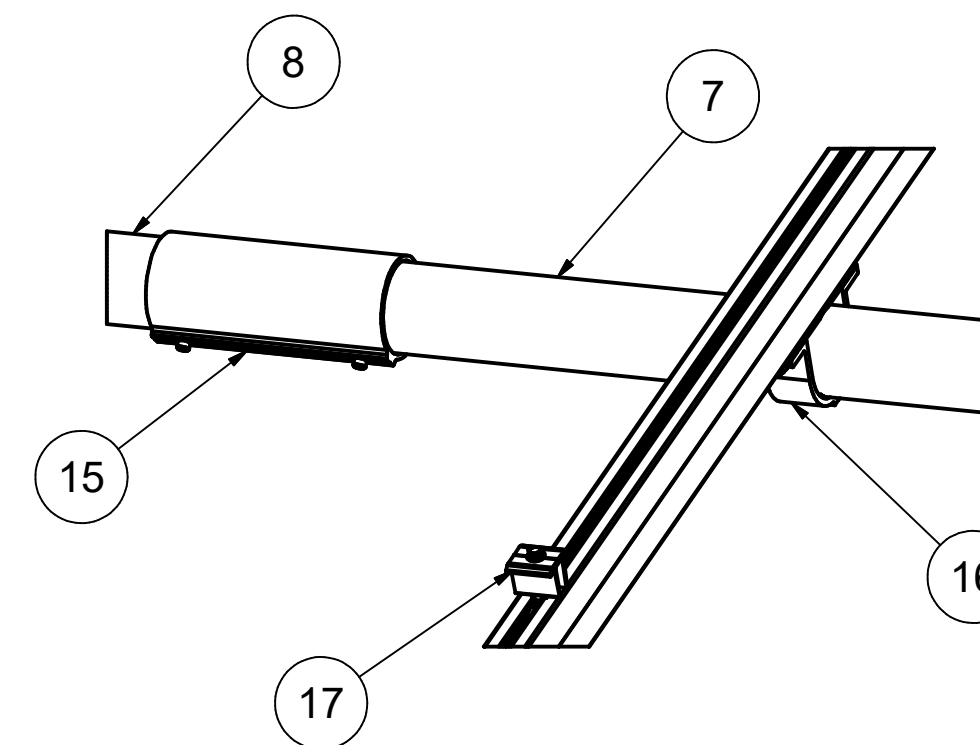
DETAIL A



DETAIL B



DETAIL C



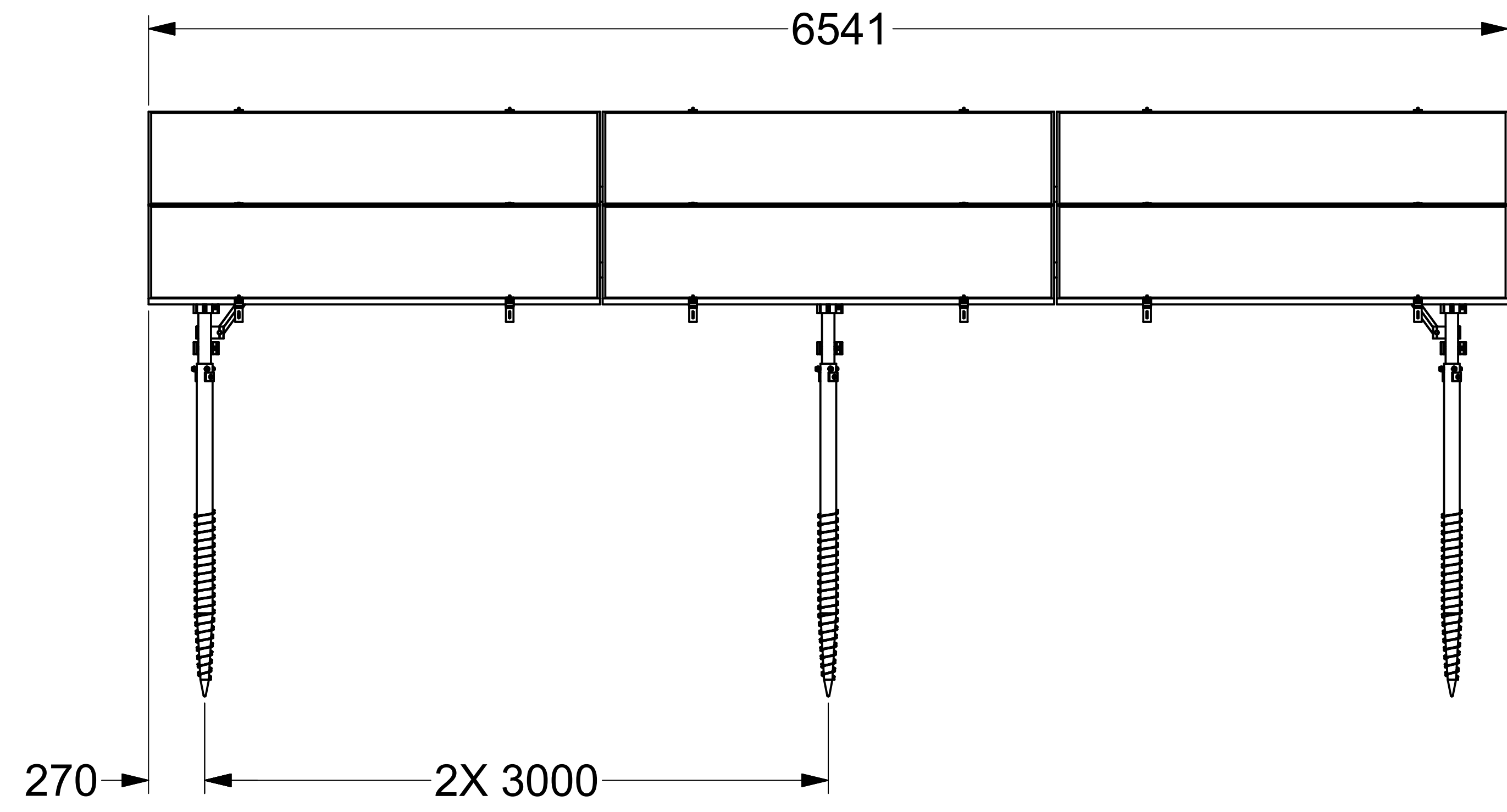
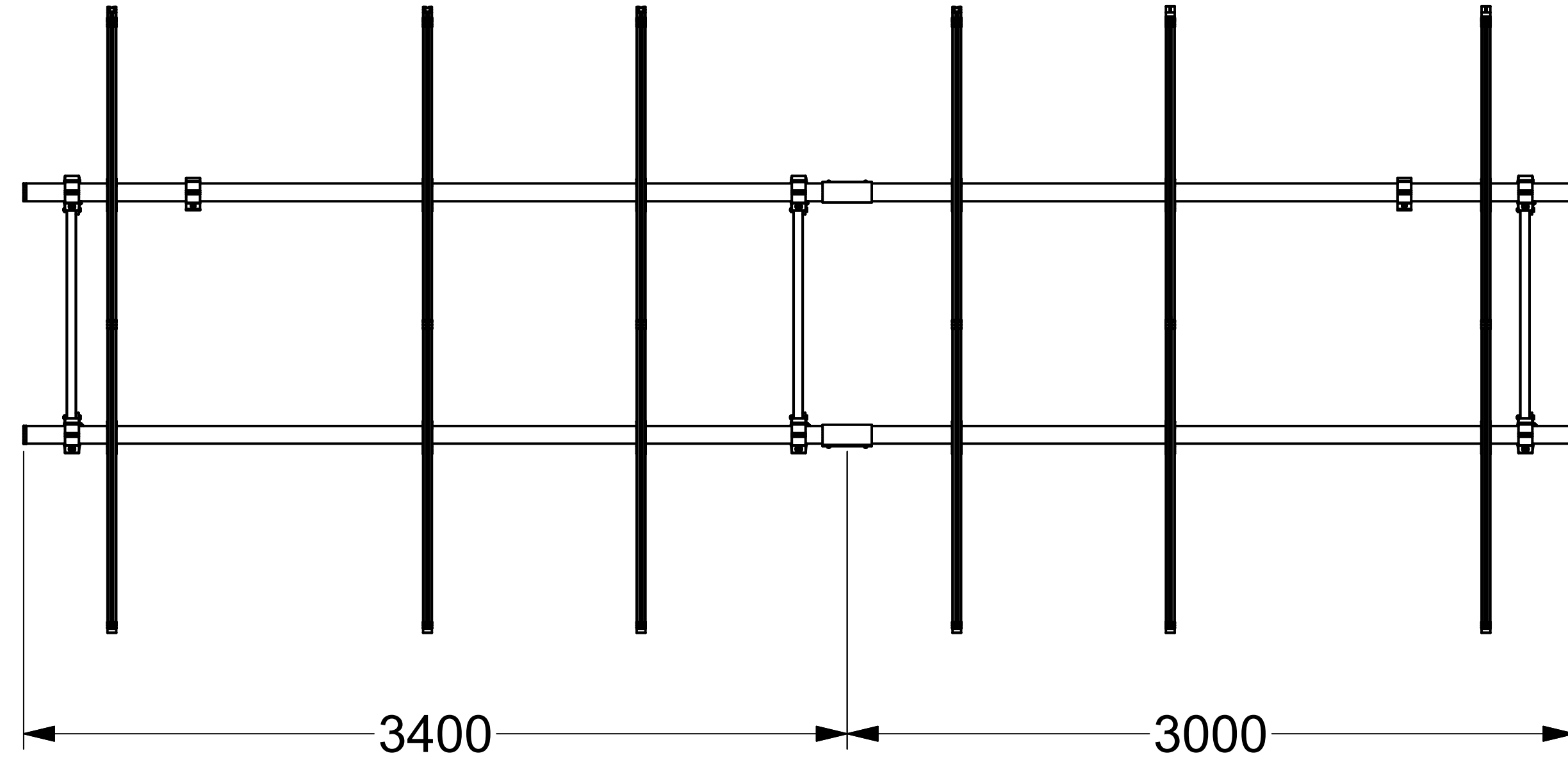
DETAIL D

ITEM	PART NUMBER	DESCRIPTION	QTY
18	K10423-063	ANCHOR, SCREW AUGER KIT,L=1600mm	6
17	K10356-001M	UNIVERSAL MID CLAMP KIT(METRIC)	6
16	K10343-005	2.5" AL PIPE U-CLAMP KIT	12
15	K10342-001	2.5" PIPE SPLICE KIT	2
14	K10341-002	2.5" PIPE TEE KIT	6
13	K10338-030	30mm END CLAMP KIT	12
12	K10222-001	2.5" PIPE CLAMP KIT	2
11	K10219-001	2" AL PIPE CLAMP KIT	8
10	A50164-036	1.5"X1.5"X0.083" GAL STEEL TUBE BRACE,L=914mm	3
9	A50164-030	1.5"X1.5"X0.083" GAL STEEL TUBE BRACE,L=762mm	2
8	A21168-3400	PIPE, HSS, 2.875" OD X 12 GAUGE,L=3400mm	2
7	A21168-3000	PIPE, HSS, 2.875" OD X 12 GAUGE,L=3000mm	2
6	A21165-043	PIPE, HSS, 2.375" OD X 12 GAUGE,L=1092mm	3
5	A21165-028	PIPE, HSS, 2.375" OD X 12 GAUGE,L=711mm	3
4	A20380-001	2.5" PIPE END CAP	4
3	A20320-2720	RAIL,HR300 SUNTURF METRIC,L=2720mm	6
2	A20297-001	END CAP,HR300,GRAY	8
1		PANEL:2172X1303X30mm	6

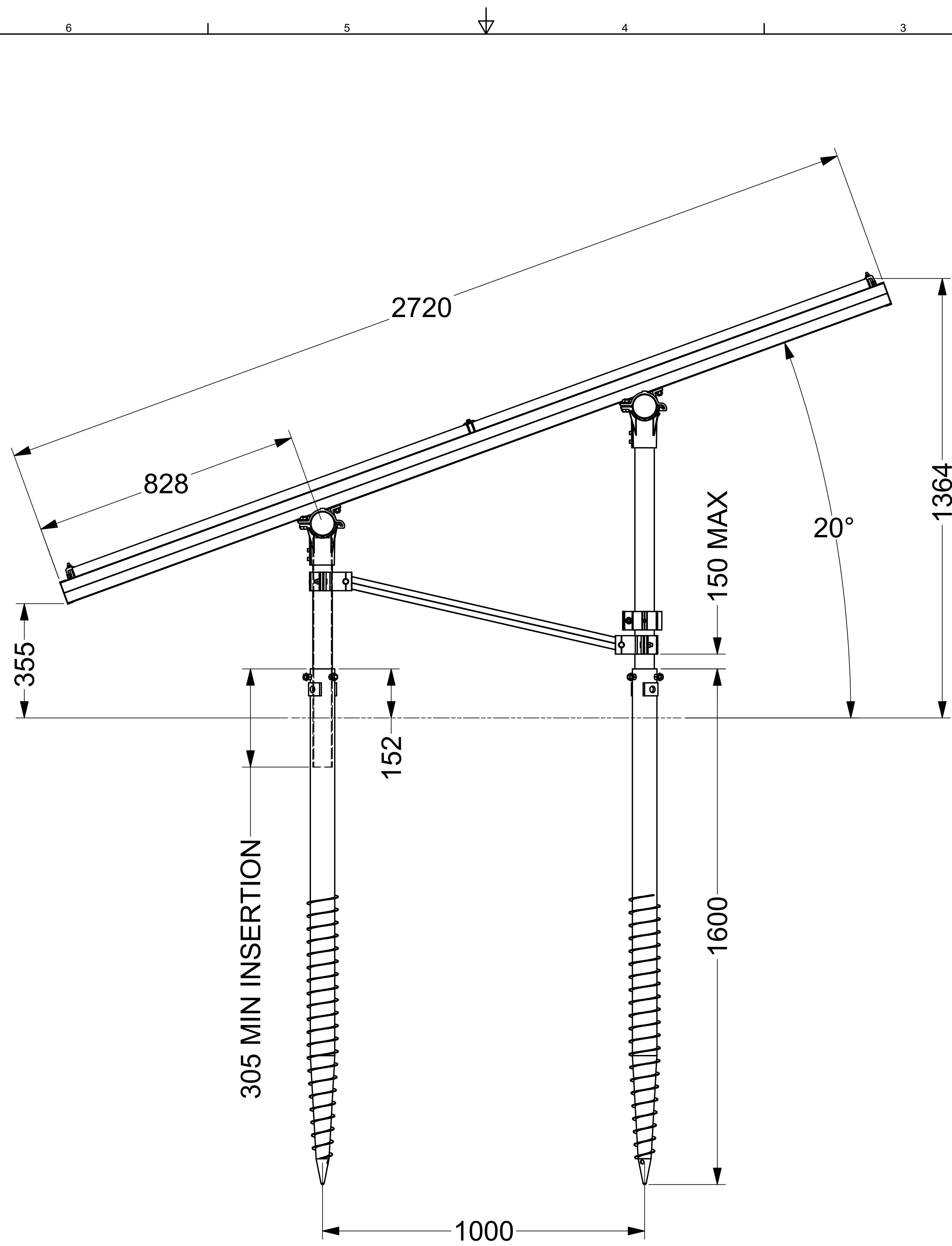
MATERIAL: SEE BOM		TITLE	
Third Angle Projection:		SunModo FuZhou.	
GENERAL SPECIFICATIONS All Dimensions in Inches (millimeters)		2LX3-20DEG-GSM	
Tolerances: Finish: 0.01 (0.25mm) X.XX (0.50mm) Break all sharp edges X.XX (0.50mm) 0.10-0.20 unless unless otherwise specified otherwise specified		DRAWING NUMBER: 221129.7	
DRAWN BY: PHQ CHECKED BY:	DATE: 06/07/2023	SCALE: 1/15 SHEET 1 of 3	

THIS DRAWING IS CONFIDENTIAL PROPERTY OF SUNMODO AND ITS CONTENTS MAY NOT BE DISCLOSED WITHOUT THE PRIOR WRITTEN CONSENT OF SUNMODO CORP.

NOTE:  
 1. DIMENSIONS LABELED AS MAX ARE MAXIMUM ALLOWABLE AND MAY RESULT IN END POSTS BEING OUTSIDE ARRAY EDGES. MAXIMUM DIMENSIONS MAY BE REDUCED IF DESIRED.



<b>SunModo FuZhou.</b>			
TITLE		2LX3-20DEG-GSM	
DRAWING NUMBER		221129.7	
D	SCALE:	1/20	SHEET 2 of 3 REV



<b>SunModo FuZhou.</b>			
TITLE		2LX3-20DEG-GSM	
D	DRAWING NUMBER	221129.7	
SCALE:	1/8	SHEET	3 of 3 REV