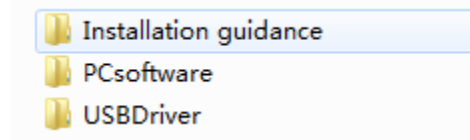


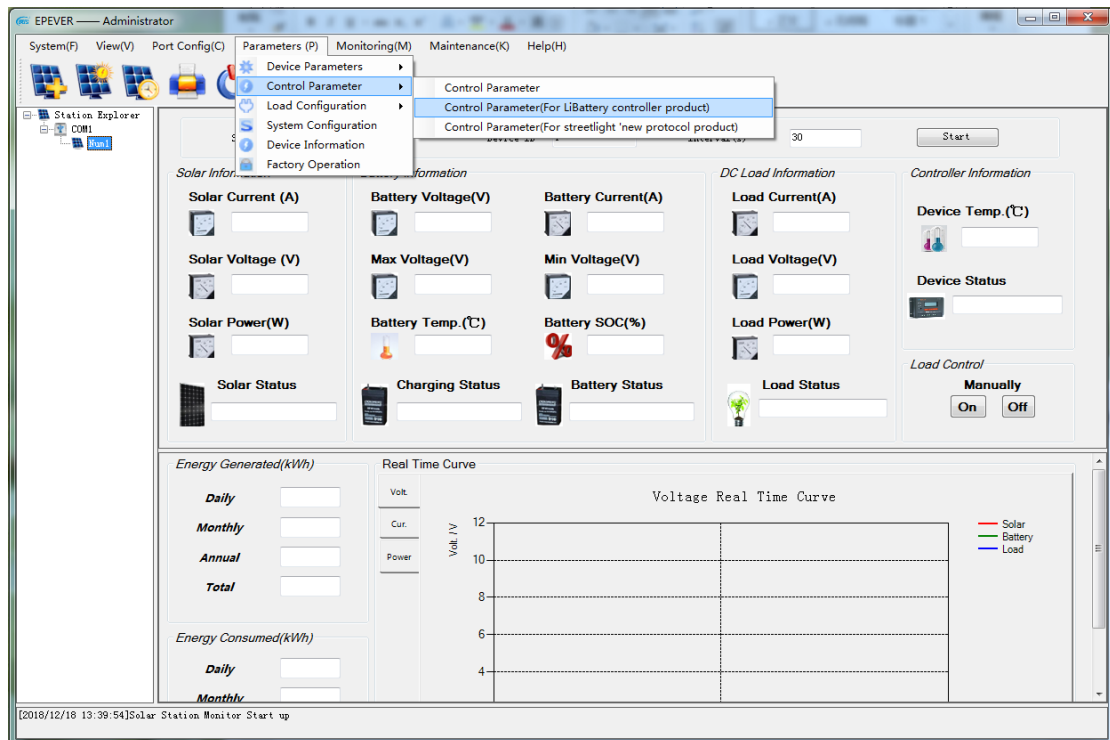
How to set Li battery parameter via PC software

Download and install PC software and USB Drive (Please follow the Installation guidance to continue the operation) . Software download address:

<https://www.epsolarpv.com/upload/file/1811/Controller-PCTools-V1.93.zip>



Step 1 : Click Parameters-Control Parameter-Control Parameter(For LiBattery controller product)



Step 2 : Click Read, receive prompt for “success”

Control Parameter(For LiBattery controller product)

Note:Control parameters for such products must be set up on this page,including the whole series of LS-LPLI,Tracer-LPLI,Tracer-BPL,Tracer-BP,TriRon,Xtra-W,Tracer-AM,GS-GPL and GS-CPLI.

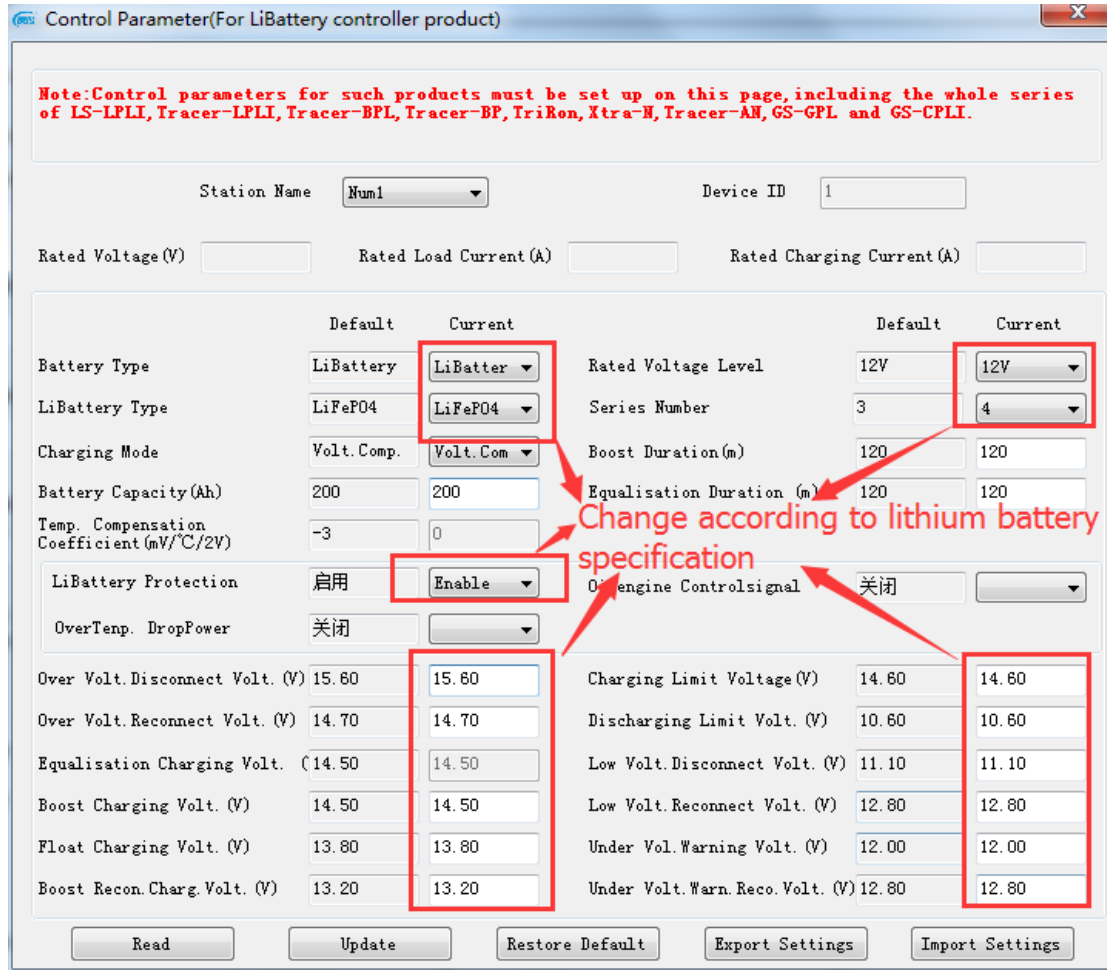
Station Name Num1 Device ID 1

Rated Voltage (V) Rated Load Current (A) Rated Charging Current (A)

	Default	Current		Default	Current
Battery Type	LiBattery		Rated Voltage Level	Self-recogn	
LiBattery Type	LiFeP04		Series Number	3	
Charging Mode	Volt.Comp.		Boost Duration(m)	120	120
Battery Capacity(Ah)	200	200	Equalisation Duration (m)	120	120
Temp. Compensation Coefficient(mV/°C/2V)	-3				
LiBattery Protection	启用		Oilengine Controlsignal	关闭	
OverTemp. DropPower	关闭				
Over Volt.Disconnect Volt. (V)	16.00		Charging Limit Voltage (V)	15.00	
Over Volt.Reconnect Volt. (V)	15.00		Discharging Limit Volt. (V)	10.60	
Equalisation Charging Volt. (V)	14.60		Low Volt.Disconnect Volt. (V)	11.10	
Boost Charging Volt. (V)	14.40		Low Volt.Reconnect Volt. (V)	12.60	
Float Charging Volt. (V)	13.80		Under Volt.Warning Volt. (V)	12.00	
Boost Recon.Charg.Volt. (V)	13.20		Under Volt.Warn.Reco.Volt. (V)	12.20	

Read Update Restore Default Export Settings Import Settings

Step 3 : Modify below parameters according your Lithium battery specification.



◆ Lithium battery parameters

The parameters are in 12V system at 25 °C, please double the values in 24V system and quadruple the values in 48V system.

Voltage	Battery type		
	LiFePO4	Li(NiCoMn)O ₂	User
Over Voltage Disconnect Voltage	15.6V	13.5V	9 ~ 17V
Charging Limit Voltage	14.6V	12.6V	9 ~ 17V
Over Voltage Reconnect Voltage	14.7V	12.7V	9 ~ 17V
Equalize Charging Voltage	14.5V	12.5V	9 ~ 17V
Boost Charging Voltage	14.5V	12.5V	9 ~ 17V
Float Charging Voltage	13.8V	12.2V	9 ~ 17V
Boost Reconnect Charging Voltage	13.2V	12.1V	9 ~ 17V
Low Voltage Reconnect Voltage	12.8V	10.5V	9 ~ 17V
Under Voltage Warning Reconnect Voltage	12.8V	11.0V	9 ~ 17V
Under Voltage Warning Voltage	12.0V	10.5V	9 ~ 17V
Low Voltage Disconnect Voltage	11.1V	9.3V	9 ~ 17V
Discharging Limit Voltage	10.6V	9.3V	9 ~ 17V

The following rules must be observed when modifying the parameter values in User for lithium battery.

- I . Over Voltage Disconnect Voltage > Over charging protection voltage (Protection Circuit Modules (BMS)) + 0.2V^{*};
- II . Over Voltage Disconnect Voltage > Over Voltage Reconnect Voltage = Charging Limit Voltage \geq Equalize Charging Voltage = Boost Charging Voltage \geq Float Charging Voltage > Boost Reconnect Charging Voltage;
- III . Low Voltage Reconnect Voltage > Low Voltage Disconnect Voltage \geq Discharging Limit Voltage;
- IV . Under Voltage Warning Reconnect Voltage > Under Voltage Warning Voltage \geq Discharging Limit Voltage;
- V . Boost Reconnect Charging voltage > Low Voltage Reconnect Voltage;
- VI . Low Voltage Disconnect Voltage \geq Over discharging protection voltage (BMS) + 0.2V^{*}.



WARNING: The voltage parameters of lithium battery can be set, but you must refer to the voltage parameters of lithium battery BMS.



WARNING: The required accuracy of BMS shall be at least 0.2V. If the deviation is higher than 0.2V, the manufacturer will assume no liability for any system malfunction caused by this.

Step 4 : Click Update, receive prompt for “success”

Control Parameter(For LiBattery controller product)

Note:Control parameters for such products must be set up on this page,including the whole series of LS-LPLI,Tracer-LPLI,Tracer-BPL,Tracer-BP,TriRon,Xtra-W,Tracer-AM,GS-GPL and GS-CPLI.

Station Name Num1 Device ID 1

Rated Voltage(V) Rated Load Current(A) Rated Charging Current(A)

	Default	Current		Default	Current
Battery Type	LiBattery	LiBatter	Rated Voltage Level	12V	12V
LiBattery Type	LiFePO4	LiFePO4	Series Number	3	4
Charging Mode	Volt.Comp.	Volt.Com	Boost Duration(m)	120	120
Battery Capacity(Ah)	200	200	Equalisation Duration (m)	120	120
Temp. Compensation Coefficient(mV/°C/2V)	-3	0			
LiBattery Protection	启用	Enable	Oilengine Controlsignal	关闭	
OverTemp. DropPower	关闭				
Over Volt. Disconnect Volt. (V)	15.60	15.60	Charging Limit Voltage(V)	14.60	14.60
Over Volt. Reconnect Volt. (V)	14.70	14.70	Discharging Limit Volt. (V)	10.60	10.60
Equalisation Charging Volt. (V)	14.50	14.50	Low Volt. Disconnect Volt. (V)	11.10	11.10
Boost Charging Volt. (V)	14.50	14.50	Low Volt. Reconnect Volt. (V)	12.80	12.80
Float Charging Volt. (V)	13.80	13.80	Under Volt. Warning Volt. (V)	12.00	12.00
Boost Recon. Charg. Volt. (V)	13.20	13.20	Under Volt. Warn. Reco. Volt. (V)	12.80	12.80

Read Update Restore Default Export Settings Import Settings

Step 5 : Read again, check parameters.

Control Parameter(For LiBattery controller product)

Note:Control parameters for such products must be set up on this page,including the whole series of LS-LPLI,Tracer-LPLI,Tracer-BPL,Tracer-BP,TriRon,Xtra-W,Tracer-AM,GS-GPL and GS-CPLI.

Station Name Num1 Device ID 1

Rated Voltage(V) Rated Load Current(A) Rated Charging Current(A)

	Default	Current		Default	Current
Battery Type	LiBattery		Rated Voltage Level	Self-recogn	
LiBattery Type	LiFePO4		Series Number	3	
Charging Mode	Volt.Comp.		Boost Duration(m)	120	120
Battery Capacity(Ah)	200	200	Equalisation Duration (m)	120	120
Temp. Compensation Coefficient(mV/°C/2V)	-3				
LiBattery Protection	启用		Oilengine Controlsignal	关闭	
OverTemp. DropPower	关闭				
Over Volt.Disconnect Volt. (V)	16.00		Charging Limit Voltage(V)	15.00	
Over Volt.Reconnect Volt. (V)	15.00		Discharging Limit Volt. (V)	10.60	
Equalisation Charging Volt. (V)	14.60		Low Volt.Disconnect Volt. (V)	11.10	
Boost Charging Volt. (V)	14.40		Low Volt.Reconnect Volt. (V)	12.60	
Float Charging Volt. (V)	13.80		Under Volt.Warning Volt. (V)	12.00	
Boost Recon.Charg.Volt. (V)	13.20		Under Volt.Warn.Reco.Volt. (V)	12.20	

Read Update Restore Default Export Settings Import Settings