

Dear user: Thanking you for selecting our products!

PRODUCT INTRODUCTION

eLOG01—Logger

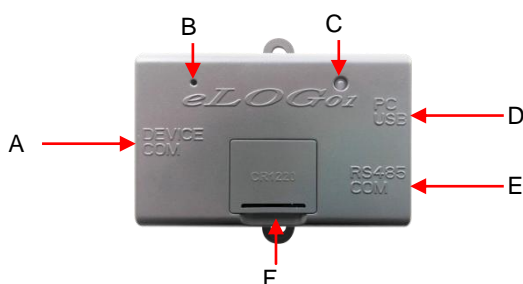
1. Product Introduction

eLOG01 is a record accessory matched with controller of RS485 interface, It can record solar system working data, and also real-time monitor system status via PC software or MT50. Default record interval is every 10 minutes, with record range to 4 months.

Main Features:

- Record & download system data
- Compatible with PC software & MT50 for real-time monitoring
- Connect to PC via USB interfaces with high compatibility
- Powered up by controller communication interface
- Record capacity: 20000 points(MAX)
- LED Indicator design, more intuitive display

2. Product Features



| Item | Instruction | |
|------|------------------------------|----------------------------|
| A | DEVICE COM interface (RJ45) | Connect the controller |
| B | Reload button | Restore factory settings |
| C | Working indicator | Working status |
| D | PC USB interface (Micro USB) | Download and manage datas |
| E | RS485 COM interface(RJ45) | Real-time monitoring |
| F | CR1220 (Button cell holder) | Store the historical datas |



NOTE: After rebooting the controller, please adjust controller clock accurately, otherwise it will lead to eLOG01 time disordered or loss of datas.



NOTE: eLOG01 is not equipped with CR1220 button cell form factory.

3. Reload Button

| Operation | Instruction |
|---------------------------------|--|
| Press the button | Indicator is flashing once, eLOG01 is normal Indicator is OFF, eLOG01 is halted |
| Press the button and hold on 5s | Clear the log records and restore factory settings |



NOTE: When eLOG01 model is not match with the controller, you can press the button and hold on 5s to clear this state. However, the previous data record will be cleared simultaneously.

4. Indicator

| color | Status | Instruction |
|-----------|--------------------|--|
| Green | Flashing once | Normal |
| Green | On Solid | Normal |
| Green/Red | OFF | Fault or halt |
| Red | On Solid | Standby |
| Red | Fast Flashing(2Hz) | Inconsistent model matching (ID/SN/models) |

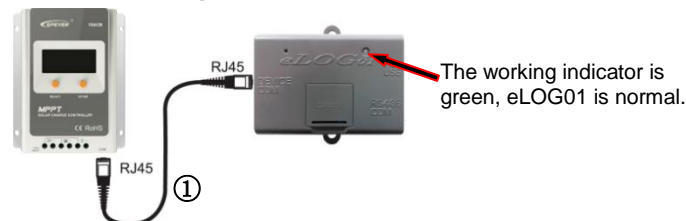
| | | |
|-----|----------------------|---|
| Red | Slowly Flashing(1Hz) | Not support this controller Communication interrupted Memory chip malfunction |
|-----|----------------------|---|

5. Applicable Models

| Series | LS-B | Tracer-AN/BN | GM-N | TRIRON | XTRA |
|----------------|-------|--------------|------|--------|------|
| Communication | RS485 | | | | |
| Interface type | RJ45 | | | | |

6. Function and Software Operation

(1)Data Recording



①RS485 communication cable

Model: CC-RS485-RS485-200U

Function: RS485 to RS485

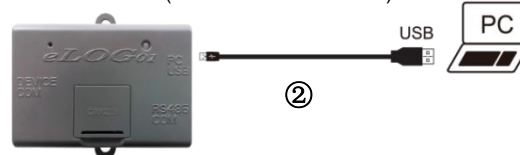
Cable length: 2m

(2)Log Download

●Local download



●Remote download(CR1220 cell is needed)



①RS485 communication cable

Model: CC-RS485-RS485-200U

Function: RS485 to RS485

Cable length: 2m

②USB communication cable

Model: CC-USB-USB-150U

Function: USB to USB

Cable length: 1.5m

●Software Installation Instructions

| Name | Model | Icon | Functions |
|--------------------------------|-----------------------|------|--|
| Log download tool ^① | eLOG01 | | Download and inquiry Logs |
| PC software ^② | Solar Station Monitor | | Real time monitoring |
| Communication cable driver | | | xr21x141x_ver1840_x86_silent_installer.exe |

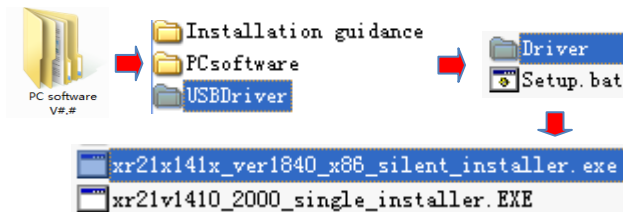
①Website: <http://www.epsolarpv.com/en/index.php/Technical/download>

-----eLOG01 Download Tools.

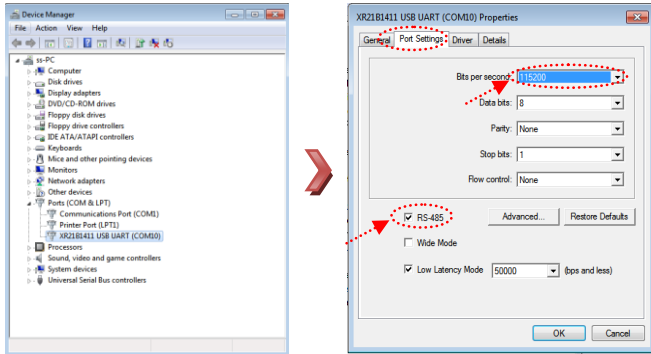
②Website: <http://www.epsolarpv.com/en/index.php/Technical/download>

----- PC Software for the Solar Charge Controller.

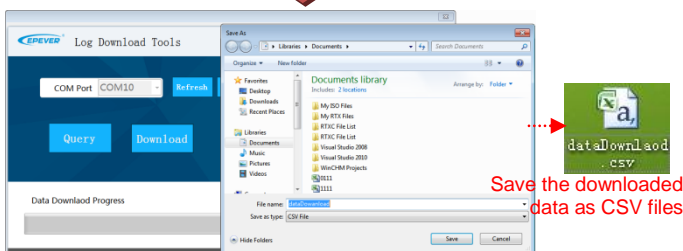
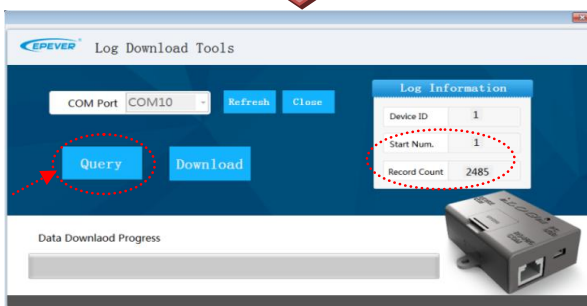
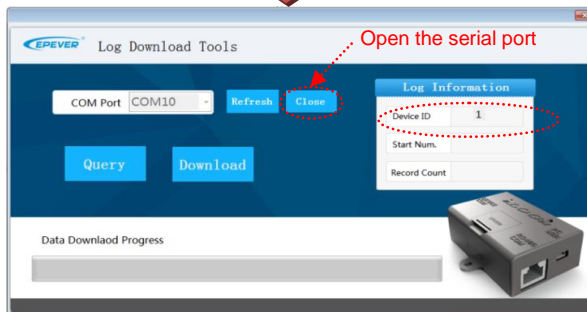
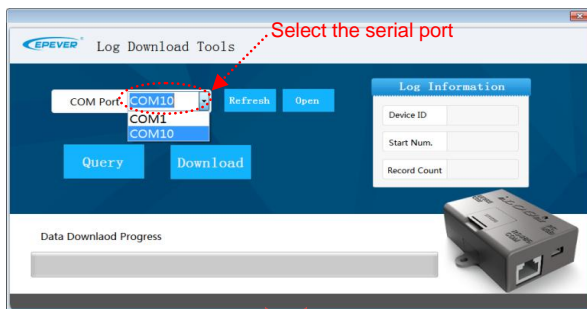
1) Communication cable driver installation



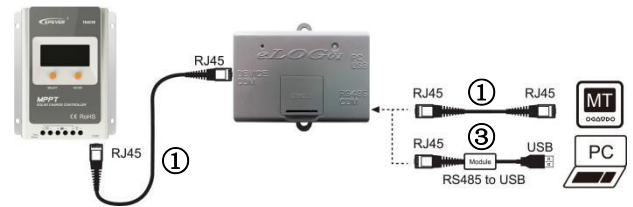
2) Set up the computer port attributes



3) Log download tool



(3) Real time monitoring



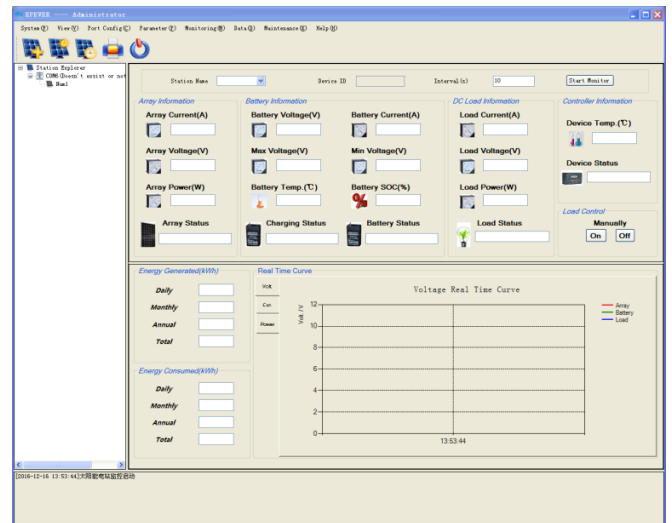
Real-time monitor the system status by the "Solar Station Monitor" software or Remote Meter.

① RS485 communication cable

Model: CC-RS485-RS485-200U
 Function: RS485 to RS485
 Cable length: 2m

③ USB communication cable(Optional)

Model: CC-USB-RS485-150U
 Function: USB to RS485
 Cable length: 1.5m



NOTE: Refer to the "Solar Station Monitor" and Remote Meter MT50 user manual.

7. Technical Parameters

| Model | eLOG01 |
|---------------------------|--|
| Input voltage | 4~10VDC Powered up by RS485 interface |
| Average power consumption | 0.3W |
| Baud rate | 115200 |
| Communication | RS485 |
| Interface type | 2 RJ45 1 Micro USB |
| Record interval | 10 minutes |
| Record capacity | 20000 points |
| Dimensions | 71x67.62x25.8mm |
| Mounting dimension | 57.6mm |
| Mounting hole size | Φ4.5 |
| Working temperature | -25℃~75℃ |
| Humidity | 5-95% (N.C.) |
| Enclosure | IP30 |
| Net weight | 42g |

Any changes without prior notice! Version number: V2.0